



Triple Clamp Specification

At Purpose Built Moto, we believe that form comes with function and classic aesthetics came about out of purpose. Vintage motorcycles had first and foremost functionality at heart, with our designs we take that same ethos and apply it to what we create; modern or classic we don't discriminate.

Bike Model:

Standard Forks or conversion:

Style: Add any design specs you would like included below.

- Slim line or bulky?
- Rounded or square?
- Visible or hidden clamp bolts?
- Solid construction or cut outs?
- Speedo mount threads?

Please add any further details you may want,

We look forward to working with you.



Tom John
Owner
Tom@purposebuiltmoto.com

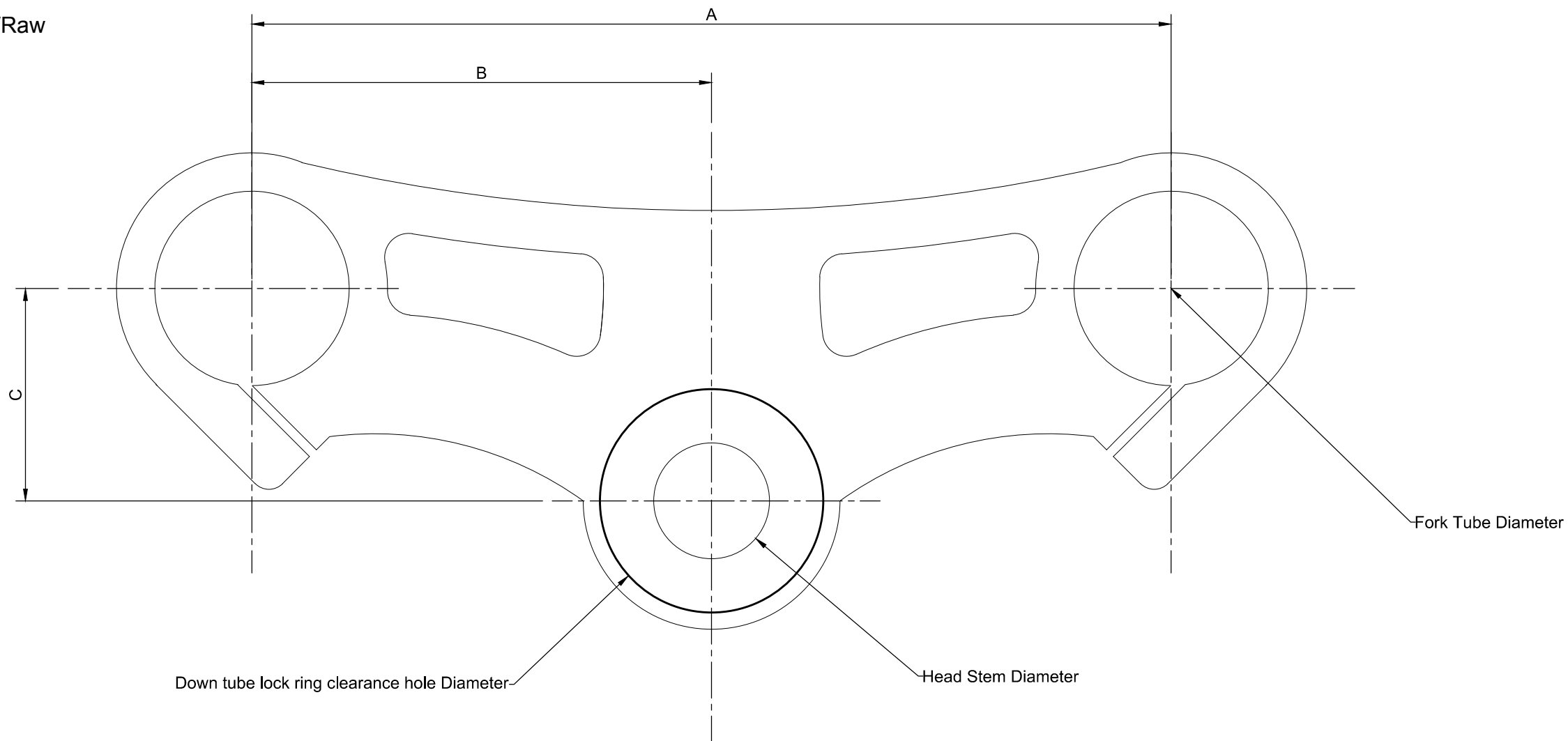


Notes:

- A-
- B-
- C-
- Head stem Dia.-
- Fork Tube Dia.-
- Lock ring clearance Dia.-

Top

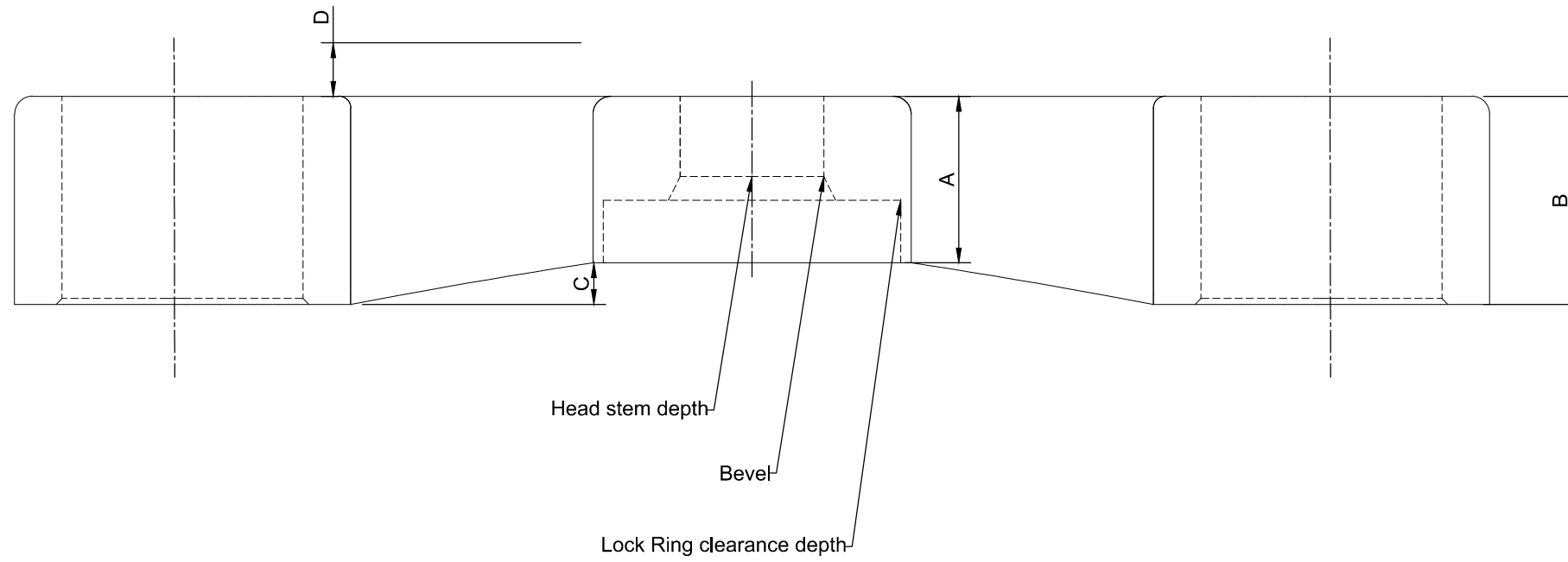
Finish: Black/Silver/Raw



Purpose Built Moto	
DRAWING TITLE: Triple Clamp Dimensions Top	
DRAWN BY: Purpose Built Moto pty ltd	DRG NO.: 1
DATE: 21-10-16	A3
SCALE: N/A	

Notes:

- Overall headstem section depth A-
- Overall clamp section height B-
- Bottom Vertical offset (if any) C-
- Top Vertical offset (if any) D-
- Lock ring clearance depth.-
- Bevel Dimensions.-
- Head stem depth.-



Purpose Built Moto	
DRAWING TITLE: top triple clamp elevation	
DRAWN BY: Purpose Built Moto pty ltd	DRG NO.: 1
DATE: 02-10-16	A3
SCALE: N/A	